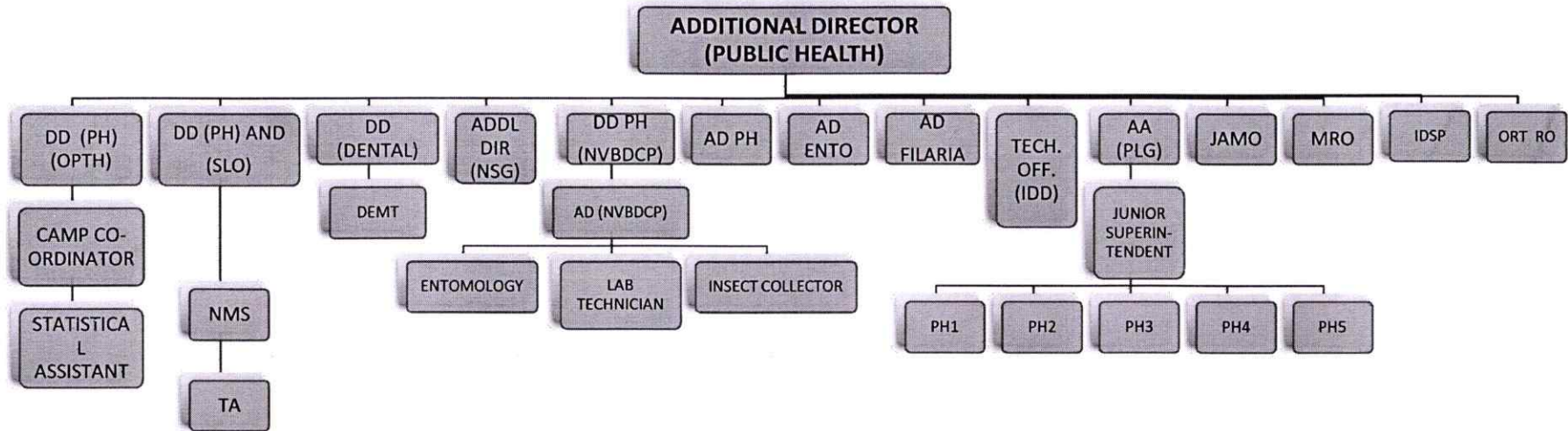


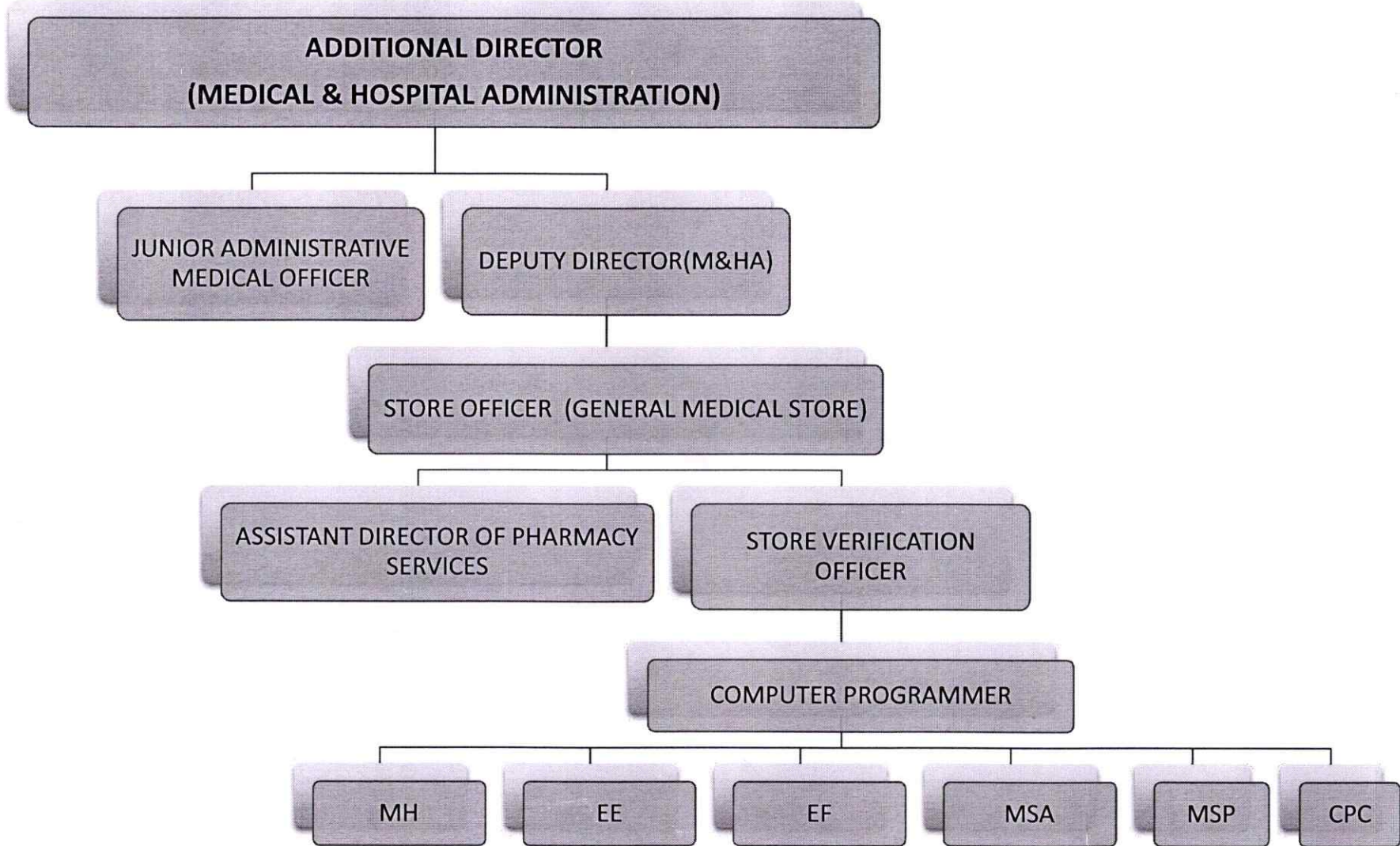
ADL DIR : Additional Director
PH : Public Health
MDL&HA : Medical and Hospital Administration
FW : Family Welfare
TB : Tuberculosis
VIG : Vigilance

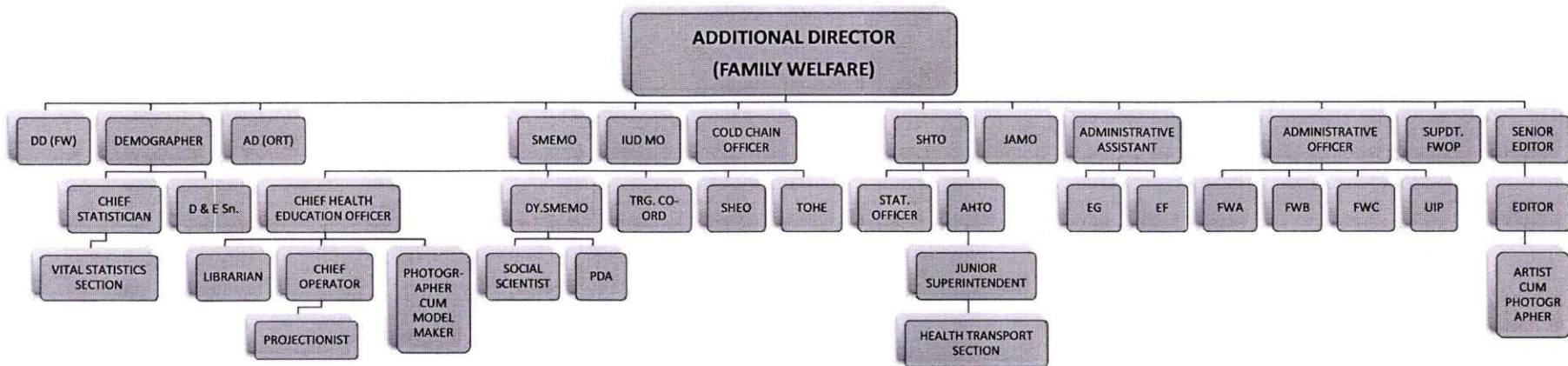
NSG : Nursing
PH LAB : Public Health Lab
KSHFW : Kerala State Health and Family Welfare
FC SUPDT : Fair Copy Superintendent
TRG & ADMN : Training
PLG : Planning



DD PH : Deputy Director (Public Health)
OPHTH : Ophthalmic
IDSP : INTEGRATED DISEASE SURVELLANCE PRGM
LEP & SLO : Leprosy and State Leprosy Officer
SNO : State Nutrition Officer
NVBDCP : National Vector Borne Disease Control Programme
ENTO : Entomology
IDD : Iodine deficiency disorder
PLG : Planning
JAMO : Junior Administrative Medical Officer

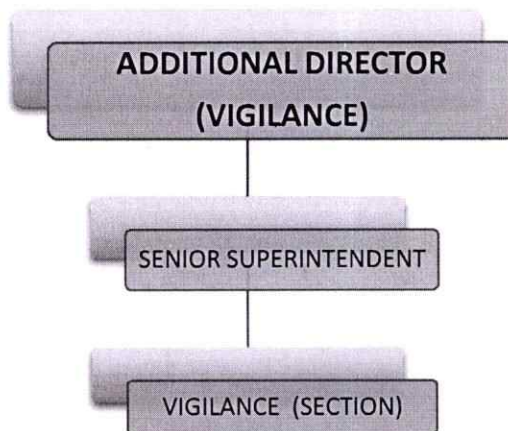
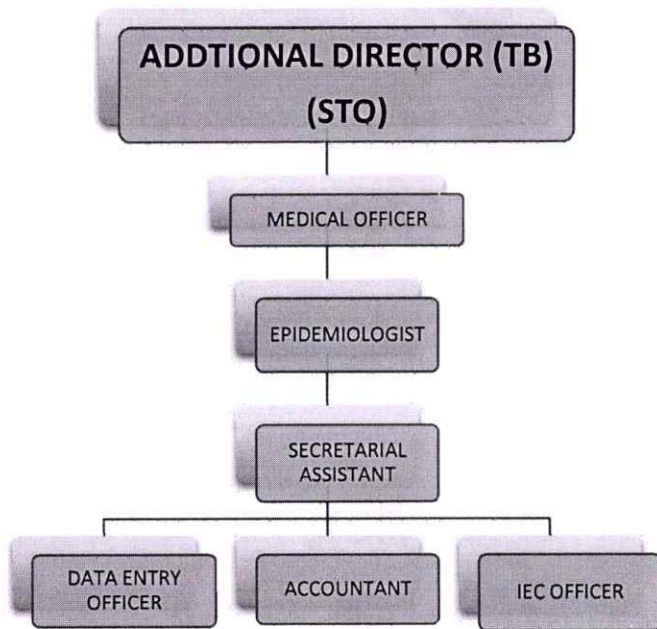
AD PH : Assistant Director (Public Health)
AA (PLG) : Administrative Assistant (Plannning)
MRO : Medical Record Librarian
CAMP.CORD. : Camp Co-ordinator
STAT.ASST. : Statistical Assistant
NMS : Non Medical Supervisour
ORT RO : Oral rehydration therapy rearch officer
TA : Technical Assistant (Lab)
DEMT : Dental Equipment Maintenance Technician
LAB.TECH. : Lab Technician
JS : Junior Superintendent

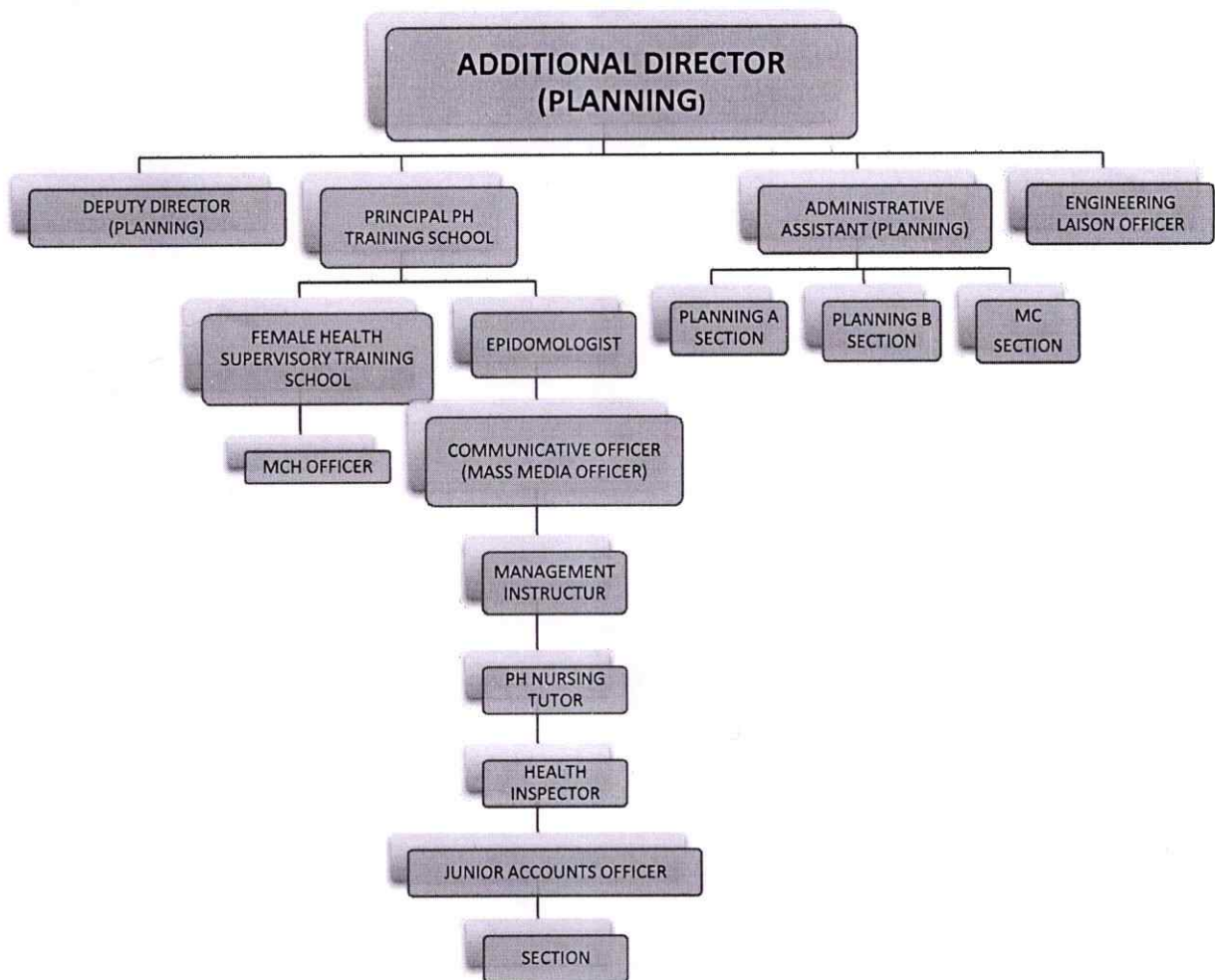


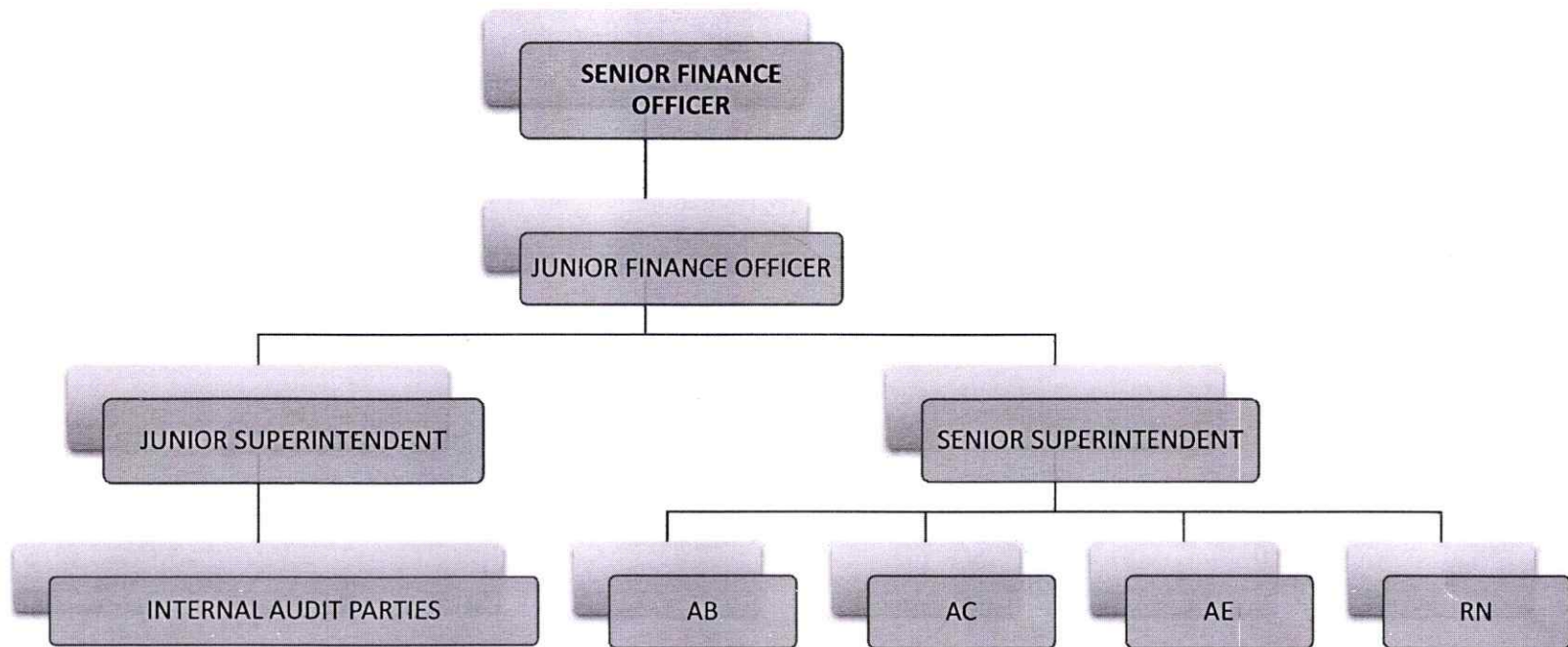


DD(FW) : Deputy Director (Family Welfare)
AD (ORT) : Assistant Director (Oral Rehydration Therapy)
SMEMO : State Mass Education and Media Officer
IUD MO : Intra Utrine Device
SHTO : State Health Transport Officer
JAMO : Junior Administrative Medical Officer
TRG CO-ORD : Training Co-ordinator
TO(HE) : Technical Officer (Health Education)
PDA : Production and Distribution Assistant
FWOP : Family Welfare Offset Press

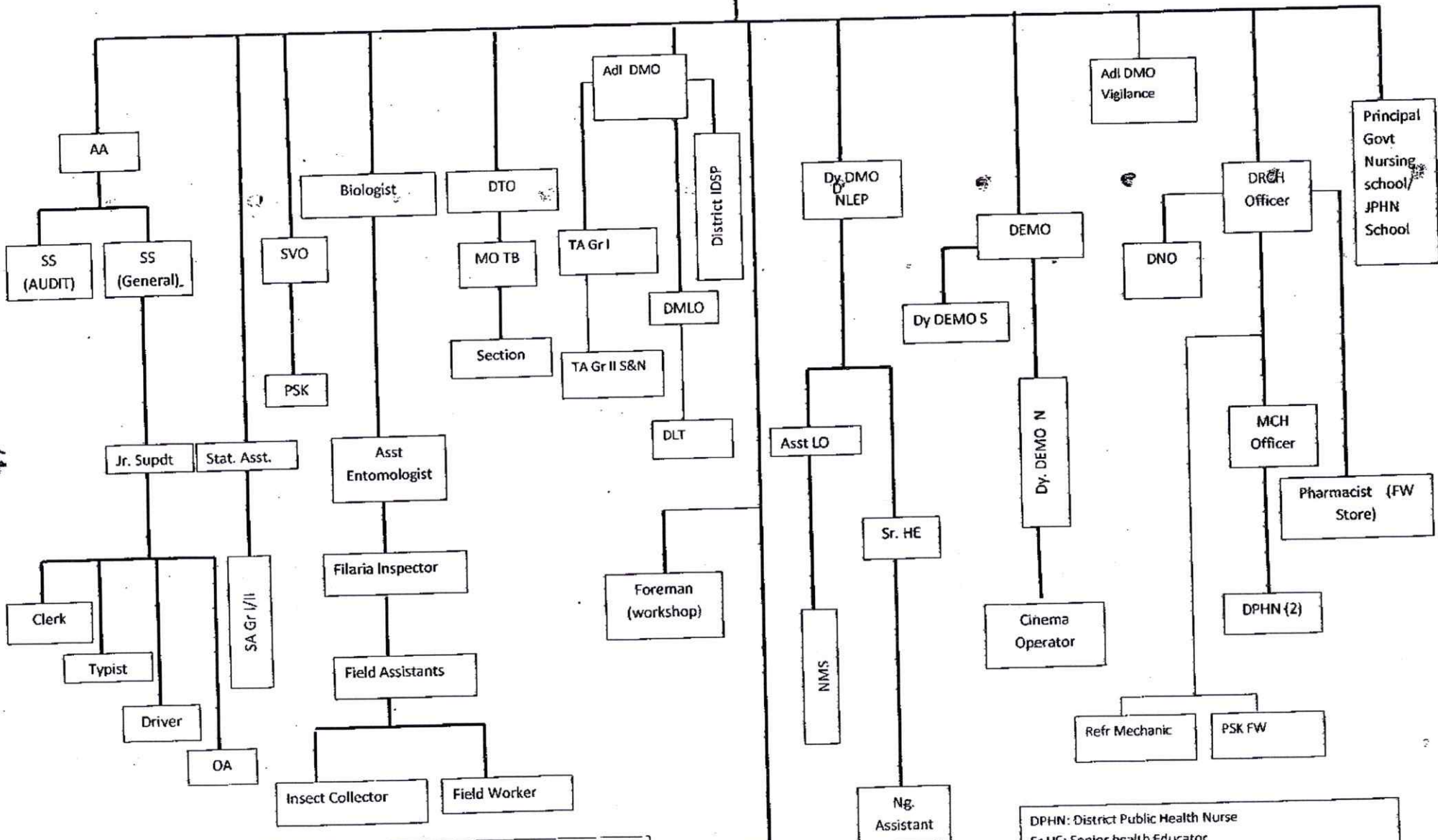
AO : Administrative Officer
AA : Administrative Assistant
CS : Chief Statistician
D&E Sn : Demography and Evaluation Section
CHEO : Chief Health Education Officer
DY.SME MO : Deputy State Mass Education and Media Officer
SHEO : State Health Education Officer
AHTO : Assistant Health Transport Officer
JS : Junior Superintendent







DISTRICT MEDICAL OFFICER OF HEALTH



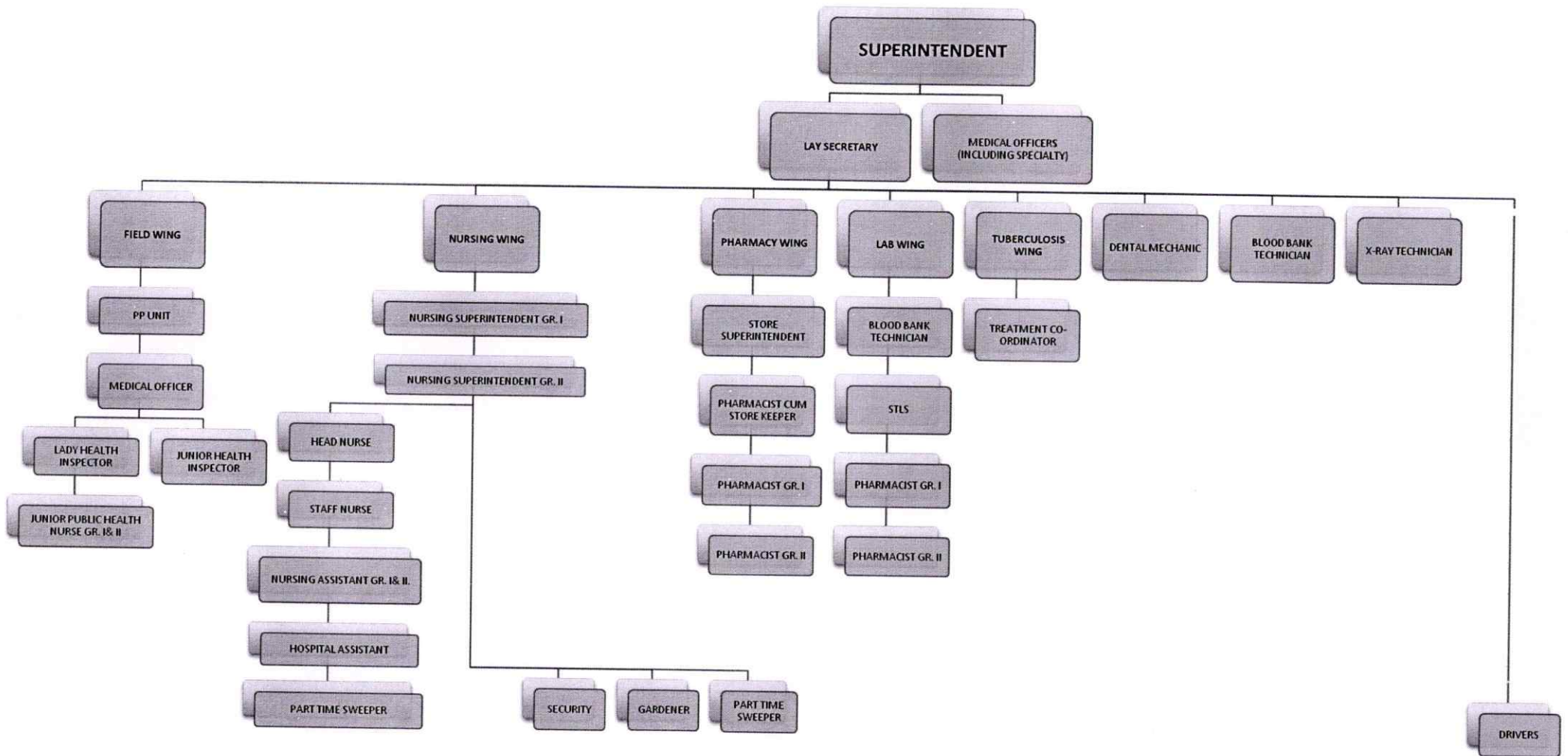
Adl DMO: Additional District Medical Officer
 Dy DMO: Deputy DMO
 DMLO: District malaria officer
 DLT: District lab Technetion
 DEMO: District Education and media off
 DNO: District Nursing officer

NMS: Non Medical Supervisor
 Sr HE: Senoir Health Officer
 RCH off: Reproductive child health off
 SVO: Store verification officer
 PSK: Pharmsist store keeper
 TA: technical Assistant

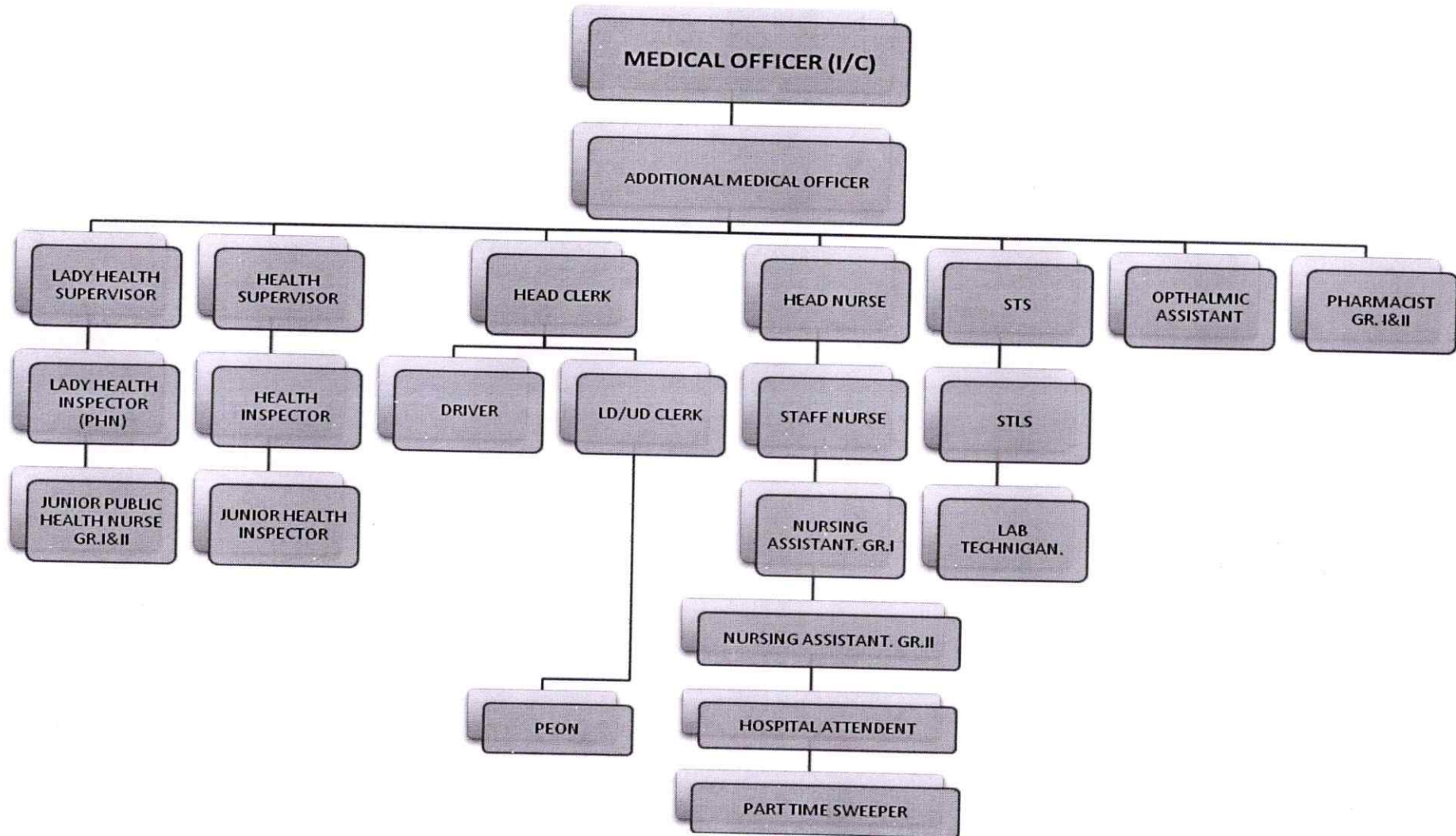
HEALTH CARE INSTITUTIONS

DPHN: District Public Health Nurse
 Sr HE: Senior health Educator
 NMS: Non Medical Supervisor
 DRCH: District Reproductive child health officer
 MCH: Mother and child health officer
 DTO: District TB officer
 AA: Administrative Assistant

THALUK HOSPITAL



COMMUNITY HEALTH CENTRE



PRIMARY HEALTH CENTRE

