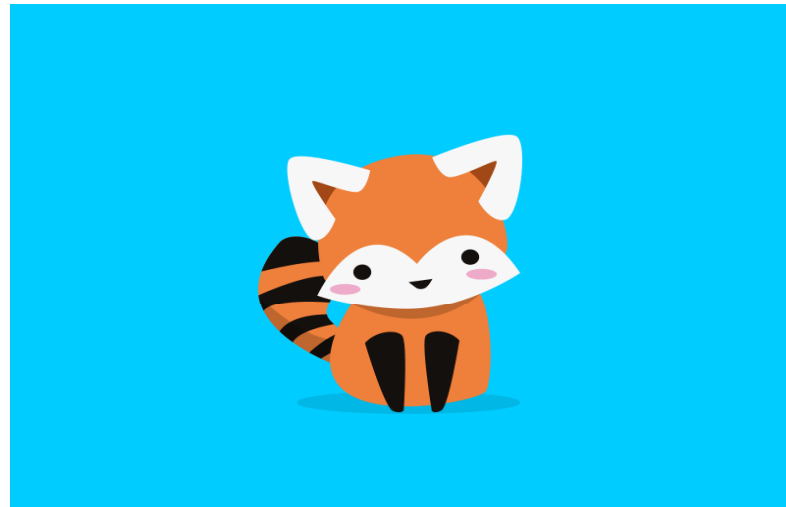


NOVEL CORONA OUTBREAK RELATED HEALTH ADVISORY FOR ANIMAL HUSBANDRY DEPARTMENT



GENERAL GUIDELINES

Identification of animals in the isolated households, if any, especially pet animals like dogs and cats, other animals like cows. Quarantine these animals in the site itself till the period of isolation for the family members ends.



Wuhan returnees and their contacts should not have any close contact with any domestic/farm animals till the period of home isolation.

People caring for pets / domestic / farm animals should observe personal hygiene.



**Unusual signs and symptoms or deaths in pets /
domestic / farm animals should be reported to the
concerned veterinary authorities.**



WHAT CAN WE DO TO GET PROTECTION ?

- **Keep hands clean.**
- **Wash hands with soap and water for at least 20 seconds**
- **Can use alcohol based hand rub**
- **Stay safe around pets**
- **Prevent bites from mosquitoes, ticks, and fleas.**



- **Be aware of zoonotic diseases both at home, away from home**
- **Handle food safely**
- **Avoid bites and scratches from animals.**
- **Children, Older adults and individuals with immune compromised state are more prone to get infection**
- **Use safe drinking water**





THANK YOU

