



Kerala HEALTH

COVID 19 Weekly Bulletin

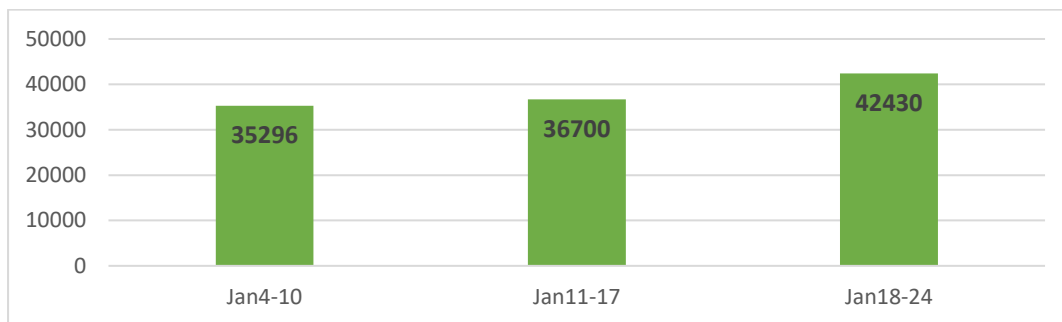
Epidemiological & Operational Updates

24th January 2021

State Summary

Parameter	Cumulative as on 23 th January	Jan 17-23 (7 days)
Total Cases	884242	42430
Total Recovered	808377	37609
Total Deaths	3587	145
Total Tests Performed	9210023	389664

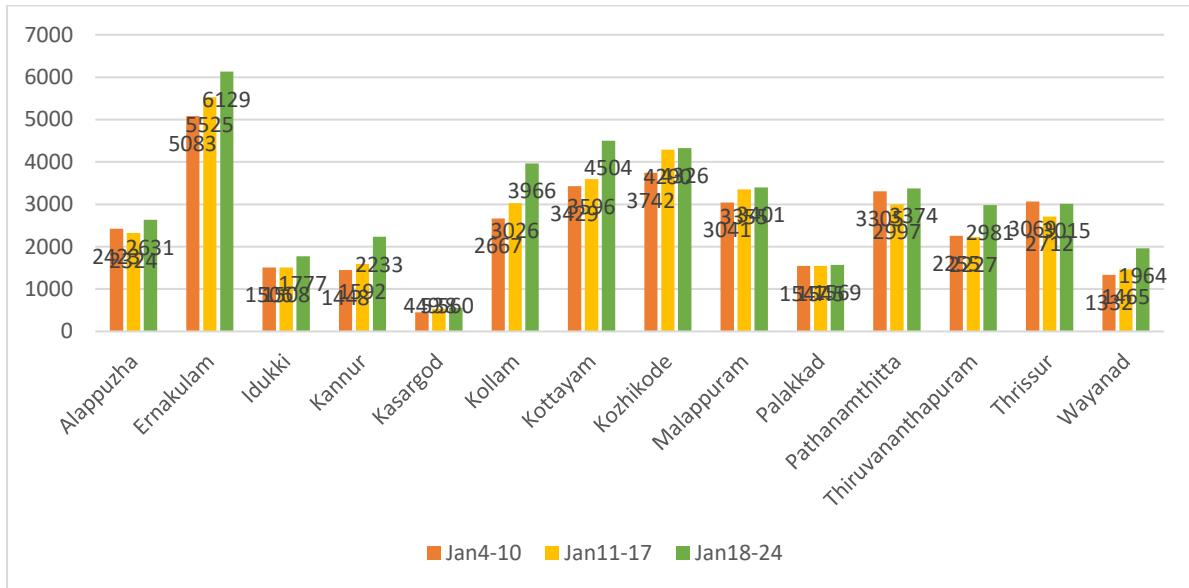
Absolute number of new cases reported per week in Kerala



There is a 15% increase in number of new cases in the current week as compared to previous week.

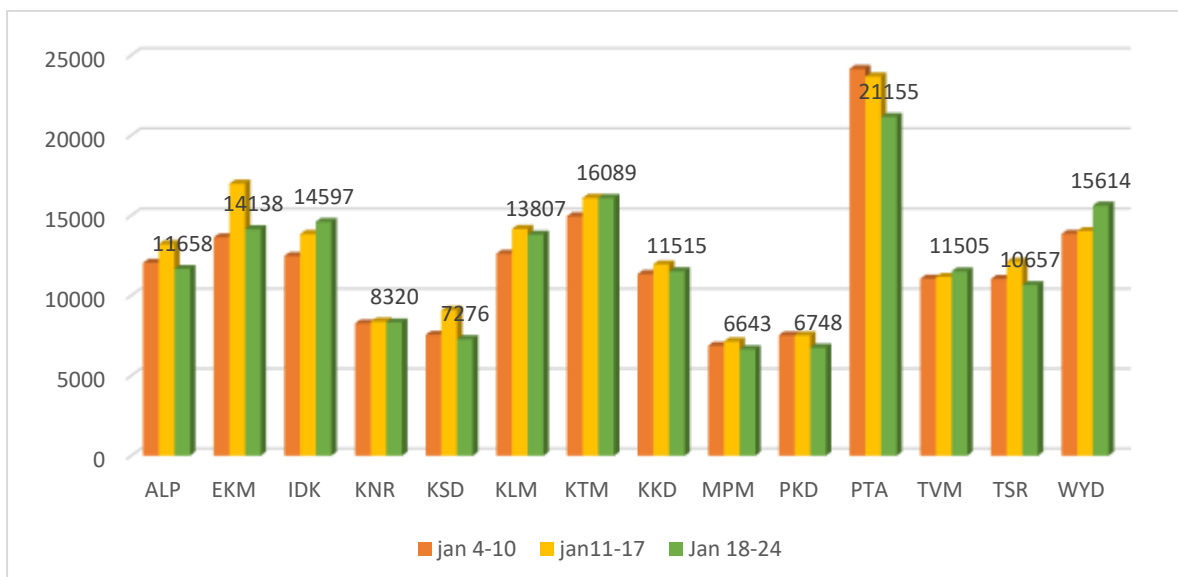


Absolute Number of new Cases reported per week



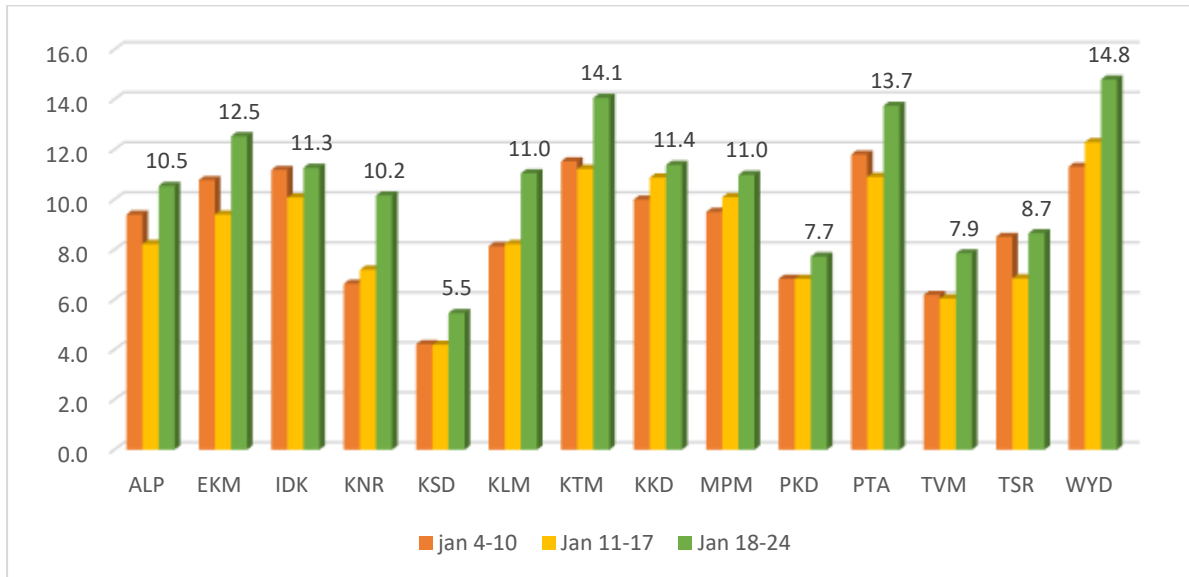
Absolute number of new cases increased in all districts in the current week as compared to the previous week. The increase was more at Kannur (40%), Thiruvananthapuram (33%), Wayanad (34%), Kollam (31%) and Kottayam (25%) as compared to previous week.

Tests per Million- Weekly data (7 days)



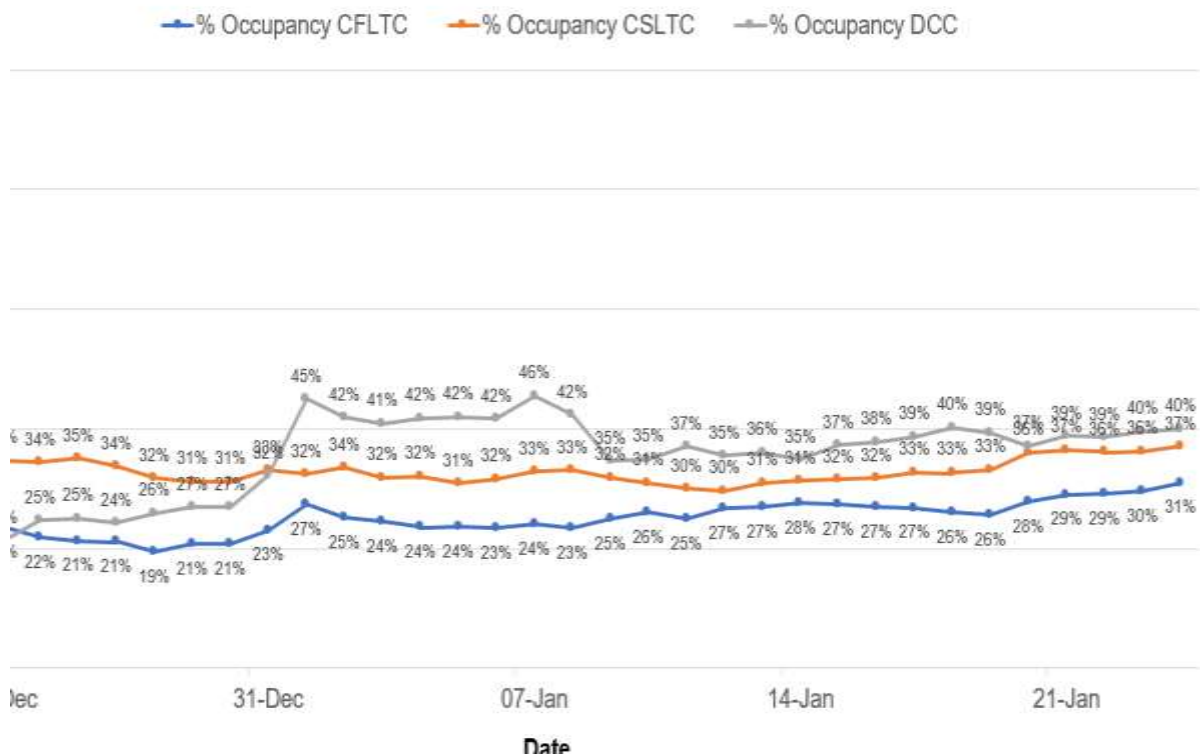


Test Positivity Rate- Weekly data



TPR has increased significantly in current week in Kannur, Kollam, Ernakulam, Kasaragod, Alappuzha, Thiruvananthapuram, Pathanamthitta and Thrissur.

Occupancy status at CFLTC/CSLTC and DCC





ICU & Ventilator occupancy at Public Sector hospitals

District	ICU Beds					Ventilators				
	Total ICU Beds	Covid Occupancy	Non Covid Occupancy	Total Occupancy	% Occupancy	Total Ventilators	Covid Occupancy	Non Covid Occupancy	Total Occupancy	% Occupancy
Thiruvananthapuram	428	102	78	180	42.1%	337	41	12	53	15.7%
Kollam	106	61	19	80	75.5%	113	10	1	11	9.7%
Pathanamthitta	90	19	19	38	42.2%	85	4	0	4	4.7%
Alappuzha	214	22	74	96	44.9%	167	8	17	25	15.0%
Kottayam	340	26	144	170	50.0%	325	10	43	53	16.3%
Idukki	37	25	0	25	67.6%	55	0	0	0	0.0%
Ernakulam	196	71	73	144	73.5%	196	21	6	27	13.8%
Thrissur	140	25	75	100	71.4%	141	12	25	37	26.2%
Palakkad	125	29	29	58	46.4%	124	7	4	11	8.9%
Malappuram	157	39	37	76	48.4%	95	11	2	13	13.7%
Kozhikode	412	26	216	242	58.7%	283	18	43	61	21.6%
Wayanad	130	19	0	19	14.6%	89	0	0	0	0.0%
Kannur	245	35	100	135	55.1%	152	7	7	14	9.2%
Kasaragod	45	6	4	10	22.2%	63	0	0	0	0.0%
Total	2665	505	868	1373	51.5%	2225	149	160	309	13.9%

BACK TO BASICS!

- ✚ **Maintain physical distancing of 2 meters**
- ✚ **Wash/Sanitise the hands frequently**
- ✚ **Wear face masks properly**
- ✚ **Avoid unnecessary travel, meetings and get togethers**
- ✚ **Follow COVID protocols at public places and establishments**

COVID cases are increasing in Kerala. Let's take all the precautions to prevent infections.